

# UltraContact



## Temperature Monitoring Labels

PakSense Ultra Contact Labels are flat, about the size of a sugar packet, and digitally record time and temperature of a product's environment during distribution or storage. Standard temperature range specifications for the most frequently shipped perishable items are pre-programmed into labels by PakSense. Users simply order the appropriate label, press the corner to activate, and attach it to product or product packaging prior to shipping.

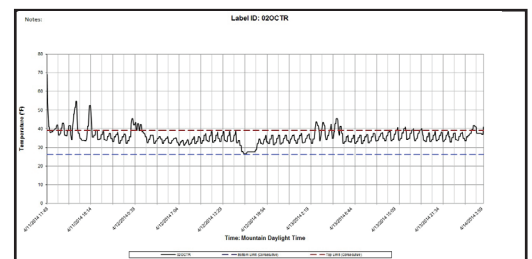
PakSense Ultra Contact Labels sample temperature every minute, ensuring that significant temperature events are captured. Labels are encased in waterproof, safe-for-food contact packaging and are identified by a unique serial number. They are different than other temperature monitoring devices because they take a surface read of the object to which they are attached, providing a closer approximation of actual product temperature versus general ambient temperature readings. PakSense Ultra Contact Labels are easy to use and provide incredible insight into what happens to product during distribution.

## Knowledge Empowers

PakSense Ultra Contact Labels can be read in two ways. First, light emitting diodes (LEDs) indicate if a shipment remained within acceptable temperature specifications. In addition, all temperature readings stored in the memory of the PakSense Ultra Contact Label can be downloaded via the PakSense Reader into a Microsoft Excel spreadsheet using the PakSense SE Software. The download includes a graph, summary statistics, and time/temperature listings in five minute increments.

## Cold Chain Simplicity

- Flat, small label
- Digitally records time and temperature data
- Status lights enable quick decisions
- Water-proof packaging
- Easy to implement
- File with a bill of lading or other documentation



Sample Graph

## Ultra Contact Label Specifications

**Size:** 1.8" x 2.2" (45mm X 57mm) pouched size, .3 ounce (8.5 grams)

**Memory:** Non-volatile 4k or 2,000 data points

**Use Life & Shelf Life:** Up to 15 months

**Calibration:** All temperature sensors calibrated during manufacturing process, ongoing calibration is not required

**Temperature Sampling Frequency:** One minute

**Recommended Operating Range:** -25°C to 60°C (-13°F to 140°F)

**Typical Temperature Accuracy:**

-10°C to 30°C (14°F to 86°F): ±0.5°C (0.9°F)

30°C to 60°C (86°F to 140°F): ±0.7°C (1.26°F)

-25°C to -10°C (-13°F to 14°F): ±0.7°C (1.26°F)

**Temperature Resolution:** 0.1°C

**Label Pouch:** Waterproof, food-grade packaging

**Start Up Delay:** Standard 30 minutes or configurable 0 minutes to 1275 minutes

**Alarm Display Data:** LEDs signify temperature breach

**Alarm Configurations:** Consecutive standard or cumulative via custom order

**Recycle Options:** Available through PakSense GreenSense™ program

## Technical Specifications — PakSense Reader

Power – 2 standard AAA batteries

PC connection via USB cable (provided)

## Technical Specifications — PakSense Software

Supported Operating Systems:

Vista, Windows 7 and Windows 8

Microsoft Office 2003 - 2013

PakSense, Inc. Time and Temperature Summary Information	
<b>Shipping Information</b>	
Label Serial Number	02OCTR
Label activation time and date	4/11/2014 11:49
Receiving Location	Boise
Shipment Receiving Date/Stop Date	4/14/2014 4:14
Time Zone	Mountain Daylight Time
Custom Field 1	Pulp Temp was 38F
Custom Field 2	Received by XYZ Trucking
Custom Field 3	Received by crew 3
Custom Field 4	Reefer temps checked
Notes	Condensation noted on trailer walls, notified supervisor
<b>PakSense Label Type</b>	
Label Type	TW15F-PAK05
Cool down period	0:30
Alert Top	Over 39.0 °F 0:30 Consecutive
Alert Bottom	Under 26.1 °F 0:30 Consecutive
<b>Temperature Information</b>	
Average Temperature	35.7 °F
Standard Deviation	3.8 °F
Mean Kinetic Temperature	36.2 °F
Maximum Temperature	54.7 °F
Minimum Temperature	26.6 °F
Total time within temperature limits	85.3 % 2 Day(s) 6 hour(s) 30 minute(s)
Total time outside Alert Limit Top	14.7 % 0 Day(s) 9 hour(s) 25 minute(s)
Total time outside Alert Limit Bottom	0.0 % 0 Day(s) 0 hour(s) 0 minute(s)
Alert Top Degree Minutes	1,827.9
Alert Bottom Degree Minutes	0.0

Sample Summary Statistics



Ultra Contact Reader

**PAKSENSE**™

PakSense, Inc., +1-208-489-9010, [www.paksense.com](http://www.paksense.com), [info@paksense.com](mailto:info@paksense.com)

P/N: LITFV-DS Rev. Date: 06/2015